



United States
Department of
Agriculture

Research,
Education, and
Economics

All About NASS

Providing useful agricultural data to help data users work smarter.

Hubert Hamer
Administrator
National Agricultural Statistics Service





United States
Department of
Agriculture

Research,
Education, and
Economics

Who is NASS?

As the official statistical agency of the USDA, the National Agricultural Statistics Service provides timely, accurate, and useful statistics in service to U.S. agriculture.



United States
Department of
Agriculture

Research,
Education, and
Economics

Who is NASS?

Survey Statisticians

Mathematical Statisticians

Survey Methodologists

Commodity Analysts

IT Professionals

Public Affairs Specialists

Geographers

Statistical Researchers

800+ staff across the country

3,000 Part-time NASDA enumerators
collecting data





United States
Department of
Agriculture

Research,
Education, and
Economics

Our History

First Agricultural Statistician

- George Washington (August 1791)
- 8 survey questions to 5 states
- Focused on land values, prices, yields



The Birth of USDA

- Established by Lincoln (1862)
- Intended for information gathering
- First crop report: July 1863





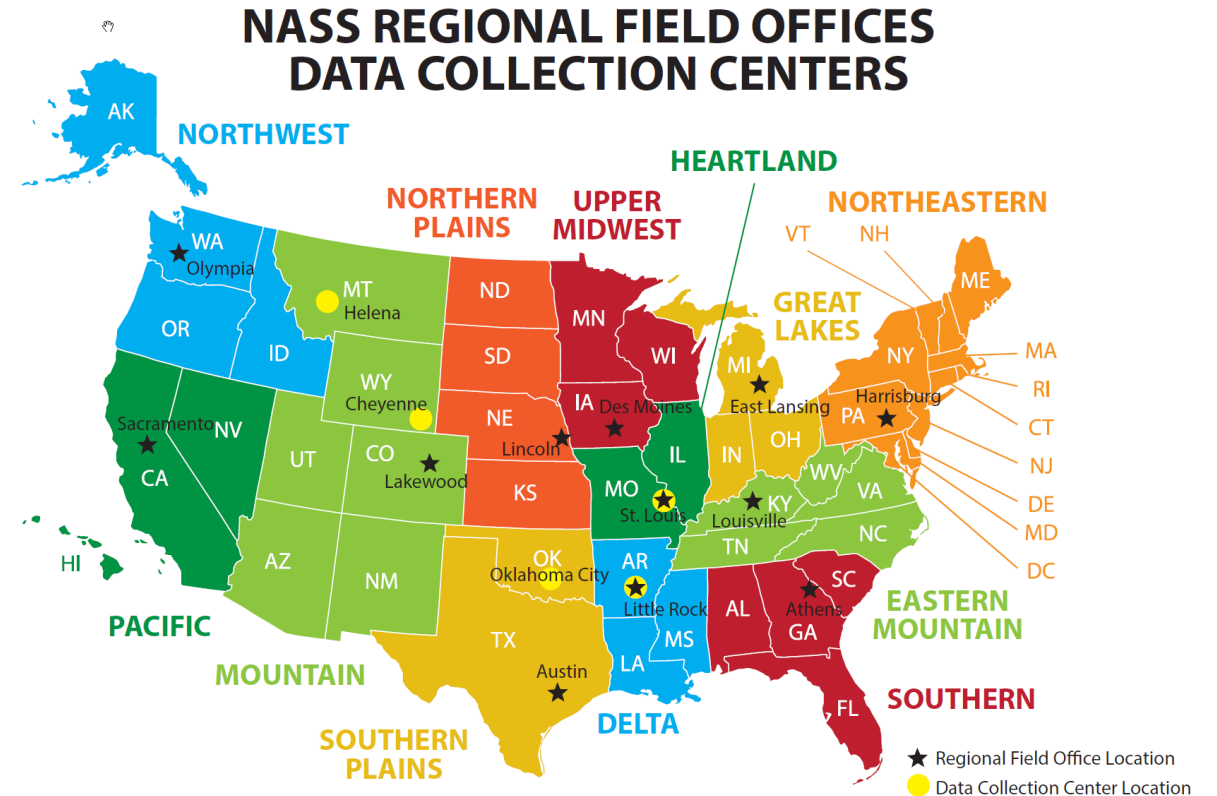
Our History

Introduction of NASS

- Established in 1863
- Named the “Division of Statistics”
- First report on crop conditions

NASS Today

- More than 850 personnel
- Serving all 50 states and Puerto Rico
- Centralized data collection and processing
- 3,000 enumerators





United States
Department of
Agriculture

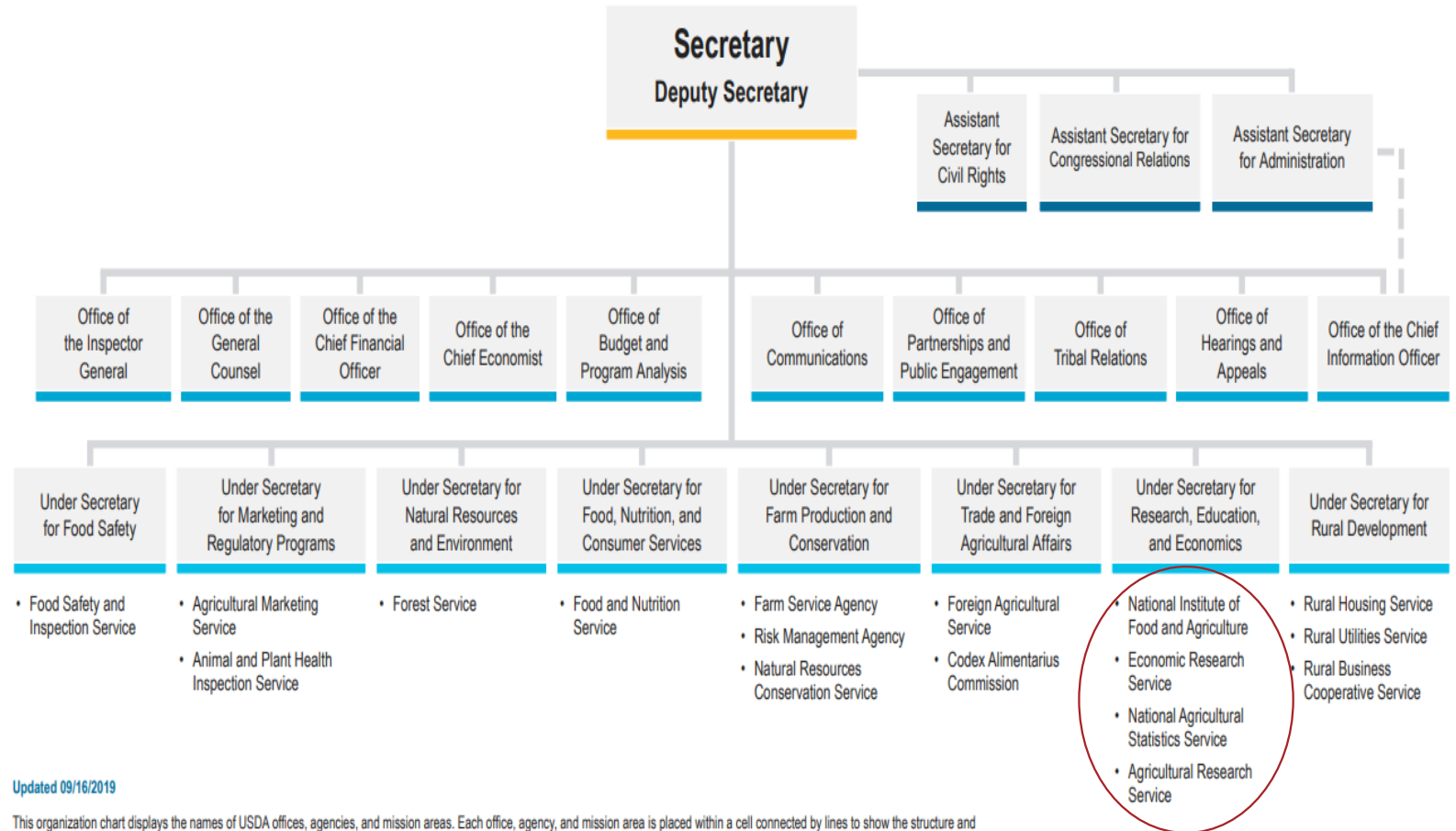
Research,
Education, and
Economics

NASS is one of
four science
and research
agencies in the
Research
Education and
Economics
Mission Area
(REE)



United States Department of Agriculture

USDA Organization Chart



Updated 09/16/2019

This organization chart displays the names of USDA offices, agencies, and mission areas. Each office, agency, and mission area is placed within a cell connected by lines to show the structure and hierarchy (Under Secretary, Deputy Secretary, or Secretary) for which they fall under. An HTML version that lists [USDA Agencies and Offices](#) and [USDA Mission Areas](#) is also available on usda.gov.

The [Secretary's Memorandum 1076-031](#) was signed August 12, 2019 effectuating a change to Rural Development.



Our Core Values

- Policy relevance
- Objectivity
- Credibility
- Trust
- Commitment





What We Do

- Collect, assemble, process, and disseminate U.S. agricultural data.
- Conduct hundreds of annual surveys.
- Publish over 450 statistical reports annually.
- Conduct the detailed Census of Agriculture every 5 years.
- Partner with state ag departments, trade associations, universities, and others.
- Conduct research to advance statistical science.



What We Do Not Do

- Set policy.
- Regulate activities.
- Permit influence.
- Disclose the identity of respondents.
- Favor any group above others.



What is “Lockup” ?

Agricultural Statistics Board Process



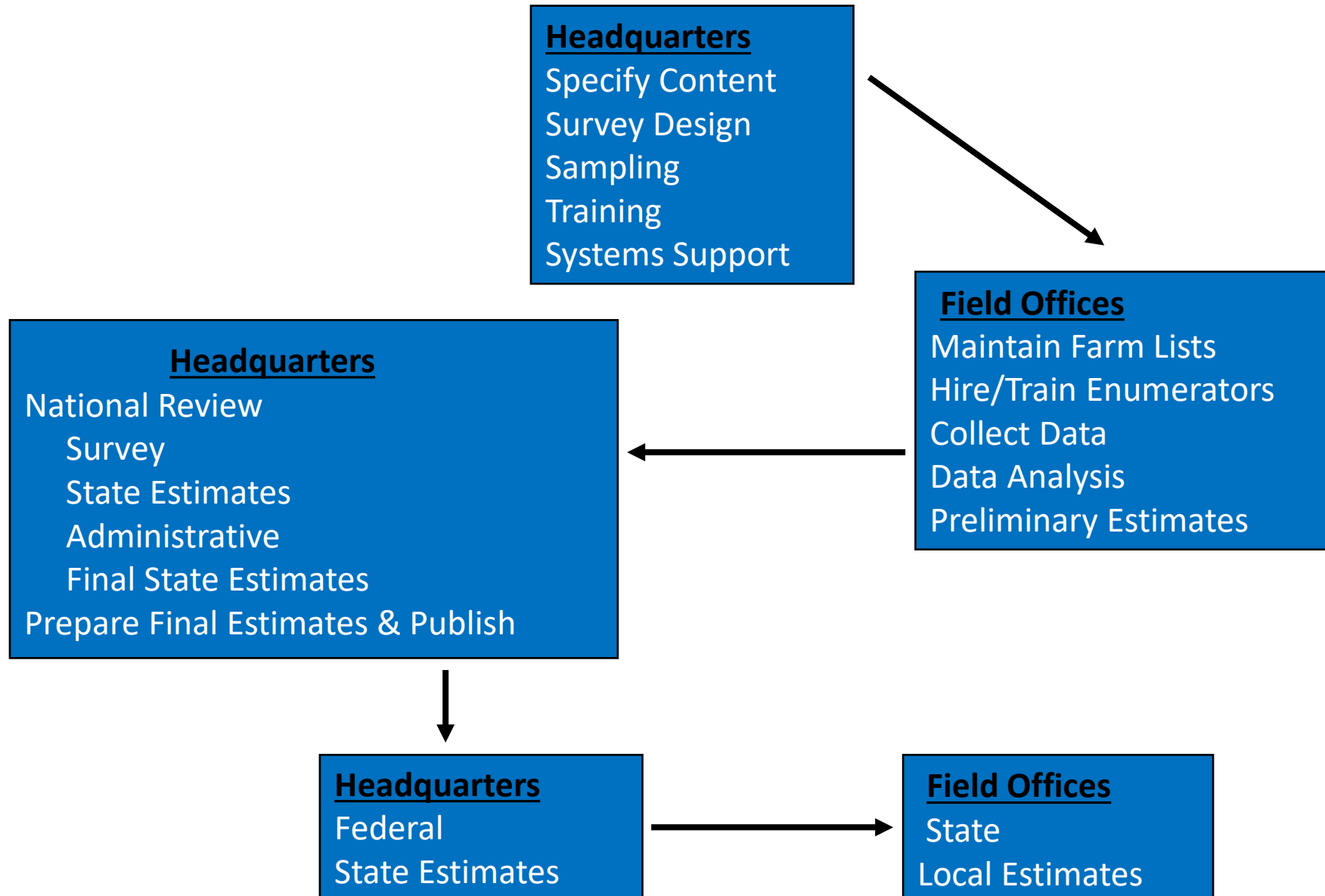
Why is a Board Process Used?

- To avoid errors
- To ensure consistent review
- To evaluate National indications
- To ensure highest security

Preparing Statistics

- Estimates based on data:
 - Producers
 - Agri-businesses
 - Administrative data
 - Objective measurements
 - Satellite Data

Survey and Estimation Process

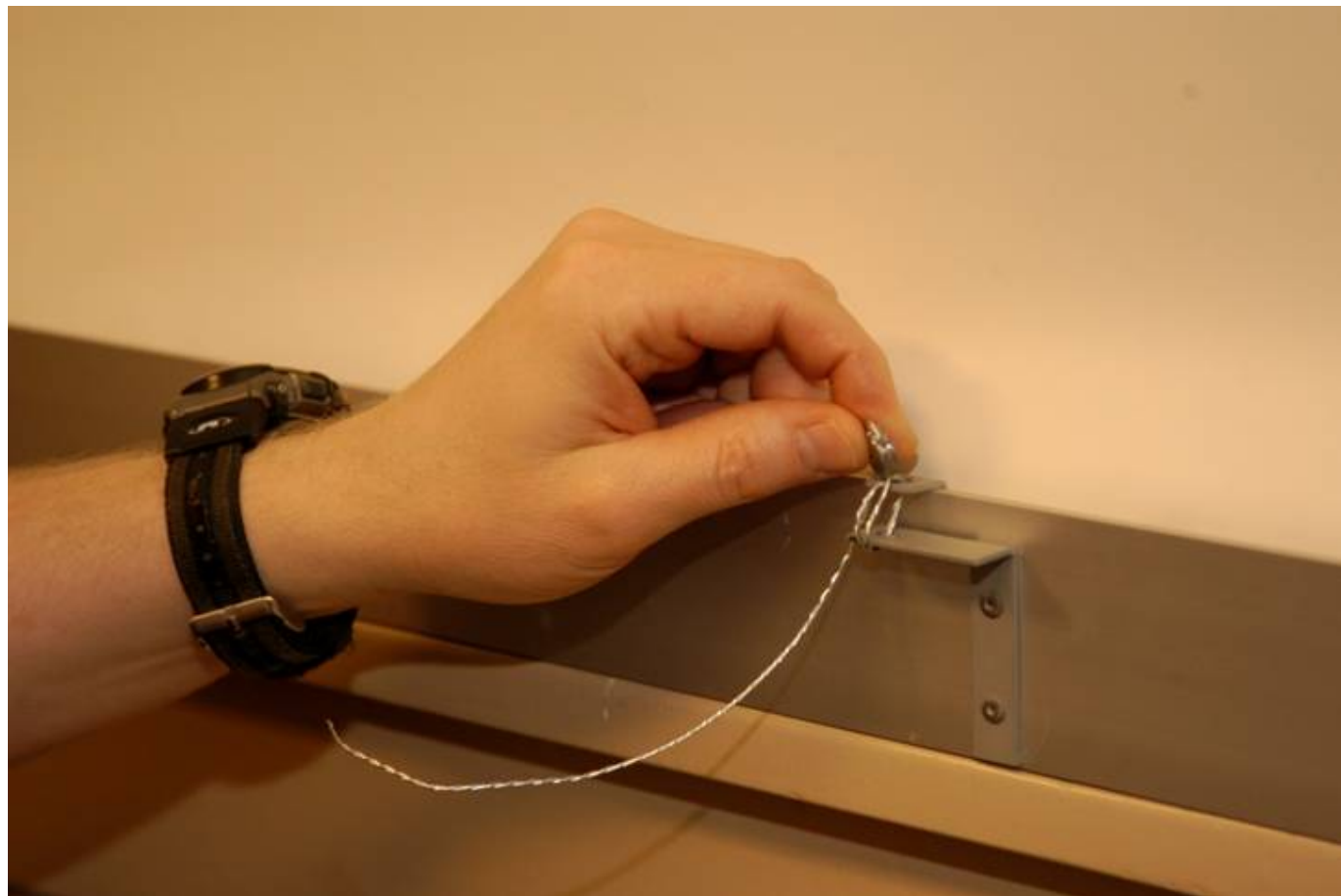




Statistics Prepared Under “Lock-up” Conditions

- Corn Yield Forecasts
- Soybean Yield Forecasts
- Cotton Yield Forecasts
- Wheat Yield Forecasts
- Citrus Production
- Grain Stocks
- Acreage
- Cattle
- Hogs and Pigs













United States Department of Agriculture











United States
Department of
Agriculture

Research,
Education, and
Economics

Major Academic Disciplines

Agricultural Economics & Agricultural Business

Agricultural Marketing

Animal Science

(or other agriculture related disciplines)

Business & Economics

Mathematics

Statistics

Environmental Science

Computer Science

Data Science



United States
Department of
Agriculture

Research,
Education, and
Economics

We are
committed to
providing
*useful
agricultural
data to help
data users
work smarter.*

Our Commitment

For more information, visit
www.nass.usda.gov

Contact: Hubert Hamer
Administrator

Phone: (202) 720-4333

Email: Hubert.Hamer@usda.gov